

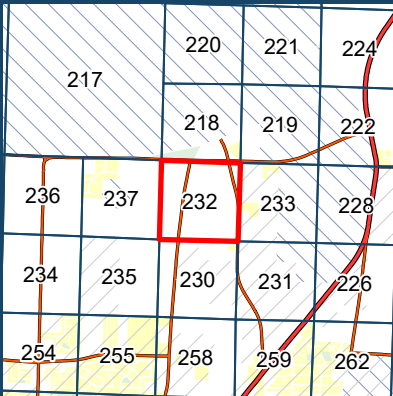


Map ID: 232

NW 1/4 Sec.26 Twp.33 R.1E

26-33-1E

Island County Assessor's Office



Current Quarter Section

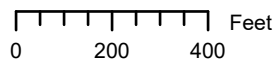
Parcels

Plats

City Limits

Military Owned

1:4,800



Abbreviated parcel numbers are listed. To get the full number:

**Metes and bounds parcels (e.g. "R01234-567-8910")**

Add the letter "R" followed by the Range (R), Township (Twp), and Section (Sec) number and a dash to the front of the labeled parcel number.

Example: R + (R, Twp, S) 01234- + (labeled parcel #) 567-8910

**Parcels in plats (e.g. "S1234-00-56789-0")**

Add the "S" number of the plat and a dash to the front of the labeled parcel number in the plat.

Example: (labeled plat #) S1234-00- + (labeled parcel #) 56789-0

**DO NOT USE AS A LEGAL DOCUMENT**

These maps were created from available public records and existing map sources, and from different surveyors and their surveys. Map features from all sources have been adjusted to achieve a "best fit" registration to the Ownership parcels. While great care was taken in this process, maps from different sources rarely agree as to the precise location of geographic features. The relative positioning of map features to one another results from combining different map sources without field "ground truthing."

For more information, visit [www.islandcountywa.gov](http://www.islandcountywa.gov)

9/14/2022

232

